

- by Dick Bocci

Lilac Tidbit

Lilacs depend on the previous year's weather to help contribute to their fragrance. If the spring is hot and rainy, the lilacs will have faintly scented fragrances. If however, the spring is cool and sunny, the fragrance will be increased.

Aside from the rose, there is no flower as beautiful as the lilac. Of the two, the lilac has the stronger scent that can carry quite a distance. In the U.S., the lilac dates back to the mid 1750's. There are 18 species of lilacs that cover over 1800 named cultivars.

There are four main flowering periods that the different species can be broken down into: early flowering, mid flowering, late flowering and very late flowering. When we talk about lilacs, we normally think of small to medium shrubs, but the two very late species are larger plants, some reaching 35-40 feet in height and can be considered trees.

The two species, Syringa pekinensis and the Syringa reticulata, present us with opportunities to use plants normally considered as small and shrub like as small to medium size single or multi-stem trees. Several named cultivars are being grown and sold in the trade today. Some have been around for a long time, and others are relatively new to the trade. The following is a group of the very late tree growing cultivars being produced by Carlton Plants:

Syringa pekinensis China Snow® is an upright rounded tree (40' by 35') with fragrant creamy white flowers from mid to late June. The cultivar's most outstanding feature is its outstanding cinnamon colored exfoliating bark.

Syringa pekinensis Summer Charm® is an upright spreading tree (20' by 15') with creamy white panicles and lustrous dark green leaves. It is a smaller and more refined tree than the China Snow®. The bark does exfoliate but not to the same degree as the China Snow®.

Syringa reticulata Ivory Silk is a selection introduced by Sheridan Nursery, Ontario, Canada. It is a sturdy, compact, oval rounded form (25' by 15') of Syringa reticulata. It flowers at a young age with heavy white blooms in late May or early June. It is still one of the best forms of reticulata.

Syringa reticulata Ivory Pillar™ cv. 'Willamette' was introduced by Carlton

Plants and selected specifically for its upright and narrower growth habit (15' by 10'). It has deep green leaves and large white flower spikes. This cultivar is one that can fit those smaller planting spaces.

Syringa reticulata Snowcap™ cv. 'Elliott' is a Carlton Plants introduction which was discovered in our nearby capital city of Salem. It was selected first for its profuse large panicles of fragrant, creamy white flowers. Its unique, uniform branching habit and thick, dark leaves are outstanding. It is a more compact form (20' by 12') than Ivory Silk.

Today's nurseries are continually looking for ways to grow trees and shrubs in different and unique ways to fit most any landscape need. The Lilac is but one example of how the diversity within a group of plants allows nurseries to produce the type of plant needed for those special planting situations.



Syringa pekinensis China Snow®

Carlton Plants LLC Field Reps



CA, OR, WA, British Columbia
Joe Dixon, Hort. Sales & Serv. LLC
13780 NW Berry Creek Road
McMinnville, OR 97128
Ph: 800-442-1459
Fx: 800-442-1460



CO, ID, MT, NM, UT, WY, Alberta
Steve Carlson
5621 Mt. Audubon Place
Longmont, CO 80503
Ph: 800-442-1458
Fx: 800-442-1462



IA, MN, ND, NE, SD, WI, Manitoba
Gary Bills
6600 26th Street
Sioux Falls, SD 57110-3927
Ph: 800-442-1457
Fx: 888-909-1312



AR, IL (So.), KS, MO, OK, TX
Tim Wommack
7038 Maryland Avenue
St Louis, MO 63130
Ph: 800-489-8733
Fx: 314-721-0899



IL (Northern), IN, MI
Gary Eggenberger
2136 Pin Oak Estates Lane
Charles City, IA 50616
Ph: 800-442-1455
Fx: 800-442-1456



KY, OH, WV
Adam McClanahan
299 Hill Avenue
Franklin, OH 45005
Ph: 800-442-1453
Fx: 800-442-1454



AL, GA, NC, SC, TN, VA
Dennis Niemeyer
195 Macedonia Lake Rd.
Saluda, NC 28773
Ph: 800-525-3597
Fx: 800-525-3598



ME, NH, NY, PA, VT, Nova Scotia, Ontario, Quebec
Will Steller
25 Emmons Rd.
Hoosick Falls, NY 12090
Ph: 800-865-6484
Fx: 800-865-6489



CT, DE, MA, MD, NJ, RI, Long Island NY
Ed Gregan
10 King Arthur Drive #123
Niantic, CT 06357
Ph: 866-991-8307
Fx: 866-991-8308



INTERNATIONAL
Rob Clayton
14301 SE Wallace Rd.
Dayton, OR 97114
Ph: 800-398-8733
Fx: 800-442-1452



CARLTON PLANTS LLC

14301 SE Wallace Rd
PO Box 398, Dayton, Oregon 97114-0398
Phone (503) 868-7971 • (800) 398-8733
FAX (800) 442-1452



CARLTON PLANTS WEBSITE IDEAS/TIPS

- Learn more about Little Twist Flowering Cherry, the Best Tree/Conifer winner of the New Varieties Showcase 2009 at the Farwest Show
- Learn more about SproutFree, the innovative rootstock for crabapples that was featured in the October 2009 issue of Nursery Management & Production
- Learn more about Autumn Radiance, one of the newest, easiest to grow and best fall-coloring red maples
- Find our bareroot Care and Handling Suggestions under Products
- Find out more about our three-point focus for growing top-quality plants. Click on Our Focus and then click on each of the three points for more information
- Find our plant availabilities separated into trees (including fruits), shrubs and rootstocks with or without pricing. Please contact us for the pricing password
- Our catalog is available online with or without pricing and can be down-loaded into your document files. Please contact us for the pricing password

Plantline



January 2010

A Newsletter from Carlton Plants LLC

Expect the Unexpected

- by Allan Elliott

Typically Carpinus is a handsome, durable, useful and problem-free group of trees. The upright Carpinus betulus Fastigiata and Frans Fontaine have become very popular due to their upright, columnar habit.

Seldom do we experience any insects or disease in the nursery. When we do, however, it is usually due to "Rust Mite" also known as 'Aerophilid Mite'.

Typical symptoms are expressed in reduced growth and dull, sandpaper textured leaves. A quick look at the underside of the leaf will reveal nothing. However with the use of a good lens or microscope, one can only wonder how so many mites can live on one leaf!

This problem is best dealt with prior to an outbreak with a dormant oil and insecticide spray in late winter or early spring prior to bud break. Treatment will kill the over-wintering eggs and mites. Scouting of spring and early

summer foliage will indicate whether a curative spray application is needed. If so, it generally requires several applications of a miticide to get control.

Disease is seldom a problem in Carpinus, however we have observed problems in some geographical areas where climatic conditions are just right.

The moisture from morning dew in coastal areas can promote Anthracnose. It usually attacks new shoots in spring leaving dead brown branches six to twelve inches long. This can occur multiple places on the tree.

The stress from a combination of diseased shoots from Anthracnose and suppressed vigor from Rust mites can lead to a "gappy", irregular and undesirable appearance. This can affect quality and result in additional pruning and time to reach saleable size.



Gappiness as a result of disease and insects

Copper based dormant sprays in fall as leaves drop, and again in spring prior to bud break will go a long way toward preventing problems.

It may also be necessary to make periodic fungicide applications as spring foliage and shoots occur and conditions for disease exist.

An ounce of prevention is worth a pound of cure!

Don't forget to contact your sales rep or our main office for any last minute plant needs. Our coolers are on until June. Shrubs and rootstocks can easily be shipped UPS.

IN THIS ISSUE

2 Conservation Corner

3 Get the Tax Credit You Deserve

4 From Russia With Love

5 Tree Form Lilac

6 Carlton Field Representatives

Conservation Corner

- by Catie Anderson

Bats

Like many animals, bats suffer from habitat loss. The primary cause of their decline is destruction of natural roosts by humans. Landowners can help by putting up bat houses on their property.

Bat houses can be built or purchased. The internet is a great resource for building plans or purchasing ready-made houses and provides many tips on types of houses and where they should be placed.

Our shop has constructed several bat houses to hang throughout the nursery. We've mounted them on our Raptor Poles (see *Plantline* January 2009 issue) and attached them to trees and barns. Statistics show that the most successful bat houses are mounted on the sides of buildings, face south or east to take advantage of morning sun, receive 10 or more hours of direct sun and are 15-18 feet above the ground.



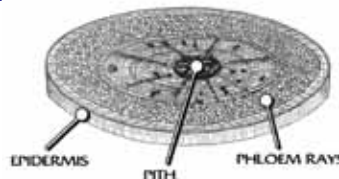
Most houses used by bats will be occupied within 6 months during the first summer they are erected. If they are not occupied by the end of the second summer they should be moved to another location.

Bats can help us control insects and in turn we can help them by creating habitat. Our first bat houses were erected this spring, we're excited to see how they work!



Starch Testing - The Value of Livability

Although visual defoliation has been the standard industry method for determining dormancy, it can sometimes be deceiving as some plants appear dormant but may not be ready to dig and remain viable through prolonged storage. Harvesting too early can damage the plants or reduce transplant success. That is why our method of Starch Testing has become an integral part of our evaluation program in determining proper harvest time.



GET THE (TAX) CREDIT YOU DESERVE

- by Jeanne DeHaan

Carlton Plants' tax season always coincides with shipping season. Our hysters are busy zooming through the coolers, carrying bundles of trees and shrubs to waiting semis to fill customers' orders. At the same time, these hysters are earning fuel tax credits on our federal income tax return.

The IRS allows these credits in certain instances when an alternative fuel such as propane is used. The tax credit amounts to 50 cents a gallon when propane is used to power motorized vehicles. This includes lift trucks like hysters, whether or not the vehicle is registered for highway use. We have a few propane-fueled worker transport busses which also qualify for the tax credit. Propane used to heat greenhouses and buildings is not included.

We learned about the fuel tax credit from our accountant a couple of years ago. The IRS first granted eligibility status to use of alternative fuels in 2006. In order to receive the credit on your federal return, you must first complete IRS Form 637 "Application for Registration (For Certain Excise Tax Activities)." Once the IRS approves your form which takes 2 or 3 months, the agency will issue you a registration number. At that point you can begin taking the credit. You cannot take the credit until you have been issued a registration number by the IRS.

You will want to keep good records to back up your claim for the tax credit. We fill our hysters and worker transport busses from a tank dedicated just for this purpose. Our propane delivery driver notes "forklift" on the slip he leaves behind after filling the tank. These slips are tallied on a simple spreadsheet noting the date, delivery slip number and number of gallons. The spreadsheet is saved on the computer in case it is ever needed for documentation.

Please consult your tax advisor or accountant for more information on how using alternative fuels can get you the credit you deserve.



Unique Staking System Adds Flexibility For Missouri Grower

- by Tim Wommack

Like many retail nurserymen, Bart Piotter of E.C. Piotter and Sons Nursery in Columbia, Missouri was unhappy with the selection of container-grown plants available from his suppliers. "Both container and B&B growers offer a pretty limited variety, and for me to be competitive, I need to provide my customers with a broad range of the unique plants they want to buy," Piotter says. "Even if I could find something different, it was hard to meet a minimum order when you only want a small number of most items."

Ultimately, Piotter decided to begin ordering a wider range of bare-root varieties from Carlton Plants and potting them up on site, which comes with its own set of difficulties. One of the biggest problems he encountered was how to keep the plant upright in the container until it develops roots. "Traditional methods of fixed staking are too inflexible when

you need to be able to move items around the nursery on a regular basis and need to put different varieties, with different heights, in the same rows," Piotter says. In addition, it was often difficult to move the newly potted plant to its field location without some sort of support.

To solve this problem, Piotter developed a unique method of staking his plants individually using nylon twine and rubber plant bands. Piotter attaches a band to the trunk of the tree above those branches that will provide the most stability for the growing tree. Three lengths of twine are tied to the band and then attached to the lip of the container through holes drilled equal distances around the perimeter.

The system gives the plant the stability it needs while its roots develop and Piotter the flexibility



he needs to manage his lot effectively. The system also keeps the plant stable while being moved and lets the nursery house various varieties side by side. Once the plants are in place, Piotter runs plastic sheeting between the rows to fill in the gaps between pots and covers the rows with mulch. The process works well and he has been happy with the outcome.

From Russia With Love

- by Travis L. Orback

Introduced to America in 1858, Russian hawthorn (*Crataegus ambigua*) is one of the toughest hawthorns rarely used in the landscape. The species name may refer to an uncertainty that may develop in trying to distinguish it from a close relative, the common hawthorn (*C. monogyna*). A test may be used to determine the differences. Russian hawthorn has two seeds and common hawthorn has one seed. In addition, Russian hawthorn has few thorns.

This small tree is native to the area of Western Asia and Eastern Europe and seems to be at home in the slightly alkaline soils of the Rocky Mountain and Central Plains regions of the U.S. (zones 4-6) although not reliably hardy in the same regions of Canada. It is said to survive at elevations up to 9,500 feet.

The tree is slow-growing and long-lived allowing it to make a fuller demonstration of its useful attributes. It is very tolerant to drought and compacted soil while resisting cedar apple rust. Furthermore, the tree exhibits exfoliating bark on older growth and yellow bark on newer growth in its quest to reach a height and width of approximately twenty feet.

This member of the rose family demonstrates the usual attributes of fruits and flowers making it useful for wildlife. White flowers in May provide nectar and pollen for insects while red fruits in late summer and fall provide food for birds. Additionally, a horizontally-branched canopy provides cover for birds and small mammals.

